



University of Technology, Jamaica

237 Old Hope Road, Kingston 6,
Jamaica, West Indies.
Phone : (876) 927-1680-8.
Fax : (876) 977-4388.
Website: www.utechjamaica.edu.jm.
E-mail : regist@utech.edu.jm

President (Actg.): Professor Colin Gyles, PhD (UWI)

July 27, 2022

Dear First Year Medical Technology Students

I am overjoyed to welcome you to The Medical Technology Course of Study at the University of Technology, Jamaica (UTech) for the academic year 2022-2023. You are now a part of a great student body that is recognized for its academic ability.

Medical Technology is a professional programme which requires its students and future graduates to behave in an ethical and professional manner. Therefore, it is expected that our students conform to all regulations and practices of the University and policies and laws governing the practice of Medical Technology.

You are required to **WEAR UNIFORM TO ALL CLASSES AND ALL PROFESSIONAL EVENTS (e.g. conferences)**. Name tags/pins are also part of the uniform and must be worn at all times. These tags/pins can be ordered through your students association; University Association of Medical Technology Students (UNAMETS) during orientation week. Please see attached material sample provided, which must be used to make the uniform skirts and/or pants in addition to white bush jackets. Level/Year one (1) students are allowed a **one (1) month** grace period to purchase and/or make their uniforms. It is expected **that within that month** students wear professional dress only (**i.e. no jeans, Slippers etc.**)

Due to the COVID-19 pandemic, that is still a part of our existence, the University's and College's orientation will be done via approach during the period August 21-27, 2022. Your programme orientation will be scheduled for August 24, 2022.

You will be provided with the link to log on. Please make every effort to be in attendance as important information will be given to ensure a smooth transition during your period of study.

You are expected to become acquainted with the information outlined in the University's Student Handbook which becomes your guide in traversing the University landscape. You will see descriptions of the services and activities available to students, as well as our rules governing academic life and our Code of Student Conduct.

This code provides the model for student interactions on campus and establishes the responsibilities that students have in making this a campus that values integrity, professionalism, respect and fairness. I ask that you review these rules and be guided accordingly. **It is also important that you follow the programme /course of study structure and uniform guide provided.**

To assist in your transition to university life, you will be assigned an academic advisor to guide you to your destination - Graduation. Make every effort to meet with your advisor and seek guidance as you progress. We want nothing but to see you succeed and become a part of the noble profession of Medical Technology and so we will do all that we can to ensure that you are successful - but you must do your part as well.

The University offers exceptional opportunities to participate in extracurricular activities that add value to your time inside the classroom. Make use of all that is available and establish a great world life balance; remember now the destination is - Graduation.

Thank you for choosing Medical Technology and once again - Welcome! We look forward to supporting your academic and personal success.

Yours Sincerely,



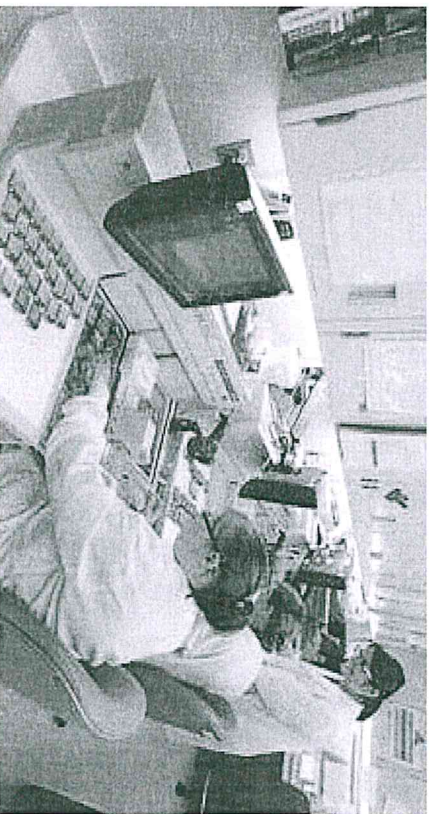
Nellian Hutkn-Rose (Mrs.)
Lecturer & Programme Director
Medical Technology
School of Allied Health and Wellness

University of Technology, Jamaica

Module selection Guide

School of Allied Health & Wellness

BSC. IN MEDICAL TECHNOLOGY



Student's Name:.....

Student's ID#:.....

Start Date: End Date:.....

Academic Advisor:.....

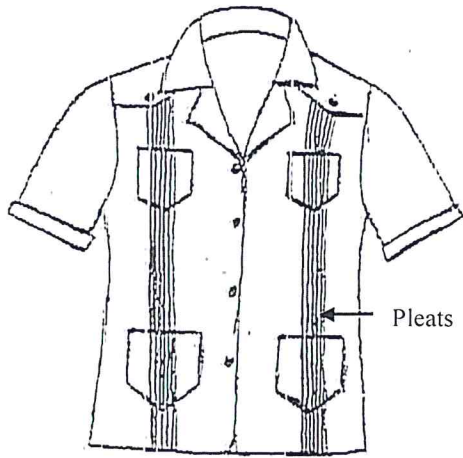
Programme Director:.....

MODULE CODES	Module Name	Credits	Prerequisite /co-requisite	Exempt	Total Credit	Results
Level 4						
Semester 1						
ME14048	Ethics for Healthcare Professionals	3				
HEA1035	Principles of Healthcare Management	3				
ME14026	Parasitology & Virology Theory	2				
ME14027	Parasitology & Virology – Practical	1				
ME14028	Haematology 3 Theory	1				
ME14029	Haematology 3 Practical	1				
B1T4001	Biotechnology	4				
PRJ4011	Research Project	3				
	Elective	3				
Semester 2						
ME14004	Clinical Chemistry Practicum 5	2.5				
ME14005	Haematology Practicum 5	2.5				
ME14006	Medical Microbiology Practicum 7-weeks 280hrs	3.5				
ME14007	Immunohaematology Practicum 3 weeks-120hrs	1.5				
ME14008	Histopathology Practicum 4 weeks -160hrs	2.0				
Total Credit 141						

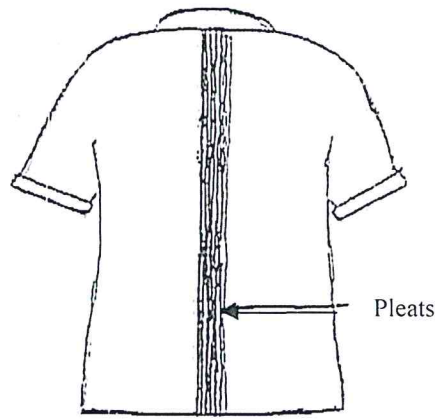
MODULE CODES	Module Name	Credits	Prerequisite /co-requisite	Exempt	Total Credit	Results
Level 1						
Semester 1						
COM1020	Academic Writing 1	3				
MAT1047	College Maths 1B	4				
CHY2021	General Chemistry 1 Theory	3				
CHY2022	General Chemistry 1 Practical 1	1				
ANP1002	Anatomy & Physiology	4				
CSP1001	Community Service Project	1				
MET3021	Medical Terminology	2				
Semester 2						
INT1001	Information Technology	3				
MAT2003	Calculus	3				
CHY2023	General Chemistry II Theory	3				
CHY2024	General Chemistry Practical II	1				
MET1002	Orientation to Medical Technology	4				
PSY1002	Introduction to Psychology	3				
Level 2						
Semester 1						
CHY2026	General Biochemistry	3				
CHY3022	Analytical chemistry	4				
IMM2002	Immunology	3				
MET2009	Haematology I Theory	4				
MET2020	Haematology I Practical	1				
MET2013	Medical Microbiology I Theory	2				
MET2014	Medical Microbiology I Practical	2				
MET2016	Histotechnology Practical	1				
MET2015	Histotechnology I Theory	1				

MODULE CODES	Module Name	Credits	Prerequisite /co-requisite	Exempt	Total Credit	Results
Level 3						
Semester 2						
COM2014	Academic Writing 2	3				
MET2006	Quality Assurance in Clinical Laboratory	3				
MET2007	Clinical Chemistry 1 Theory	4				
MET2008	Clinical Chemistry 1 Practical	1				
MET2011	Immunohaematology I Theory	3				
MET2012	Immunohaematology 2 Practical	1				
MET2017	Medical Microbiology 2	2				
MET2018	Medical Microbiology 2 Practical	2				
Semester 1						
MET3009	Clinical Chemistry 2 Theory	4				
MET3010	Clinical Chemistry 2 Practical	1				
MET3015	Immunohaematology 2 Theory	4				
MET3016	Immunohaematology 2 Practical	1				
MET3007	Medical Microbiology 3	3				
PHA3001	Toxicology & Drug Monitoring	1				
RECS3001	Research Methodology	3				
Semester 2						
MET3011	Haematology 2 Theory	3				
MET3012	Haematology 2 Practical	1				
MET3019	Histotechnology 2 Theory	1				
MET3020	Histotechnology 2 Practical	2				
MET3017	Medical Microbiology 4 Theory	4				
MET3018	Medical Microbiology 4 Practical	2				
STA3001	Biosstatistics	3				
	Elective	3				

UNIVERSITY OF TECHNOLOGY, JAMAICA
COLLEGE OF HEALTH SCIENCES
MEDICAL TECHNOLOGY UNIFORM

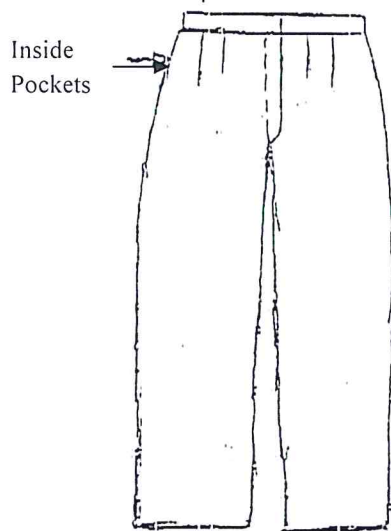


White Bush Jacket

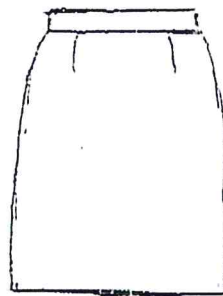


White Bush Jacket

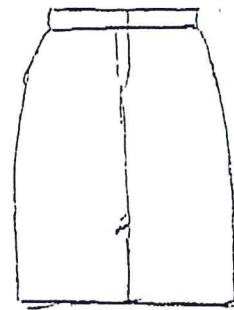
Length
(Mid - Hip)
NOT Waist
Length



Navy Blue Pants



Front



Back

Navy Blue Skirt

Knee
length